

## SOUTH BEAR CREEK

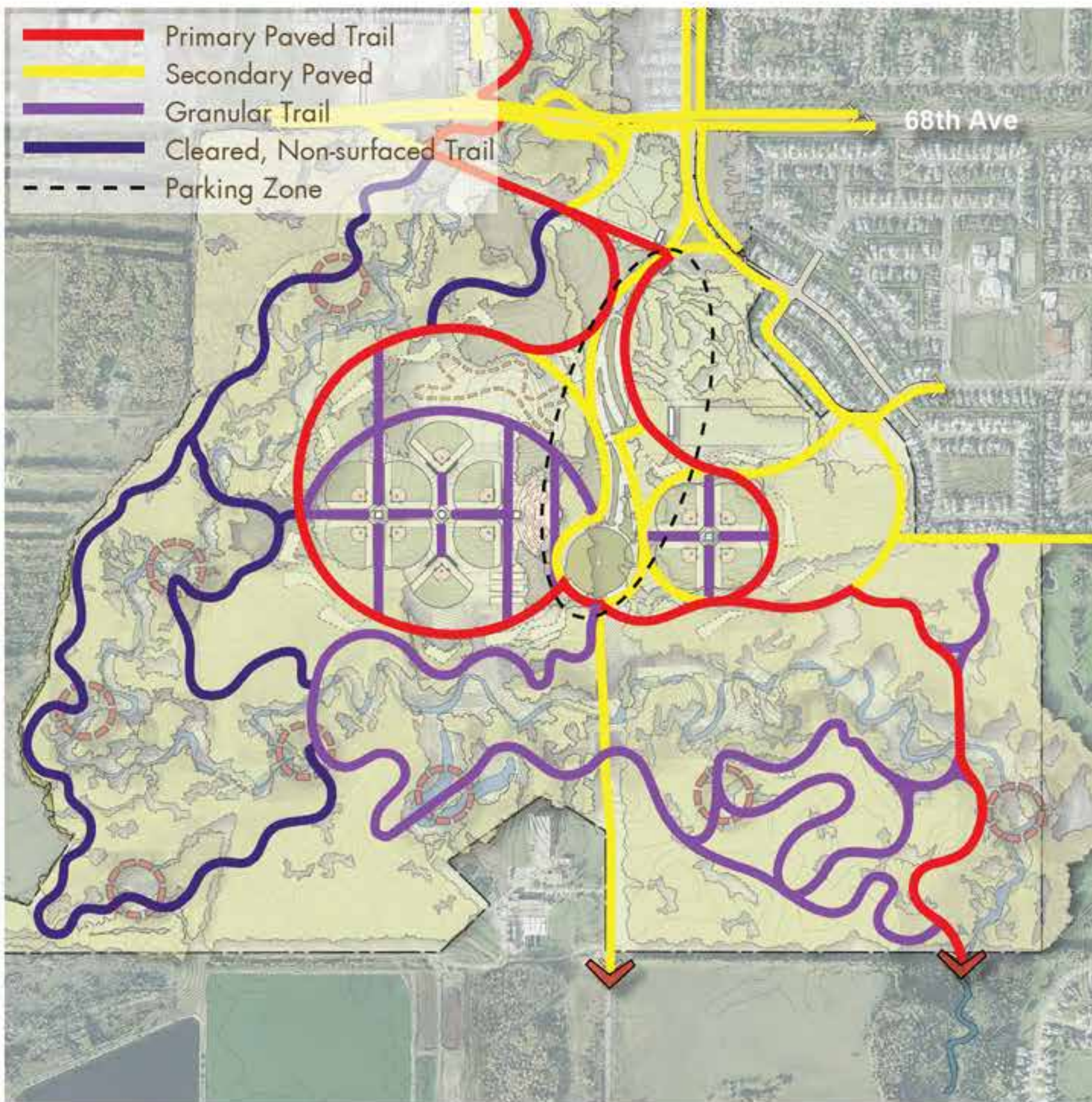
Anchoring Muskoseepi Park on the southern end, South Bear Creek claims the largest land area as well as the most diversity in recreational and trail usage. The most interesting factor of this site is its distinct transition from Parkland prairie to Boreal Forest eco region. A balance of active recreation along with passive recreation must be sought in South Bear Creek to balance its natural beauty along with the need for active space. Its part within the greater master plan vision entails a series of eighteen projects. As seen in the next chapter, these projects are ranked in terms of priority. Because of South Bear Creek's size, the area is divided into three enlargements for a greater understanding of detail (see Figure 1.1, 1.2, & 1.3).

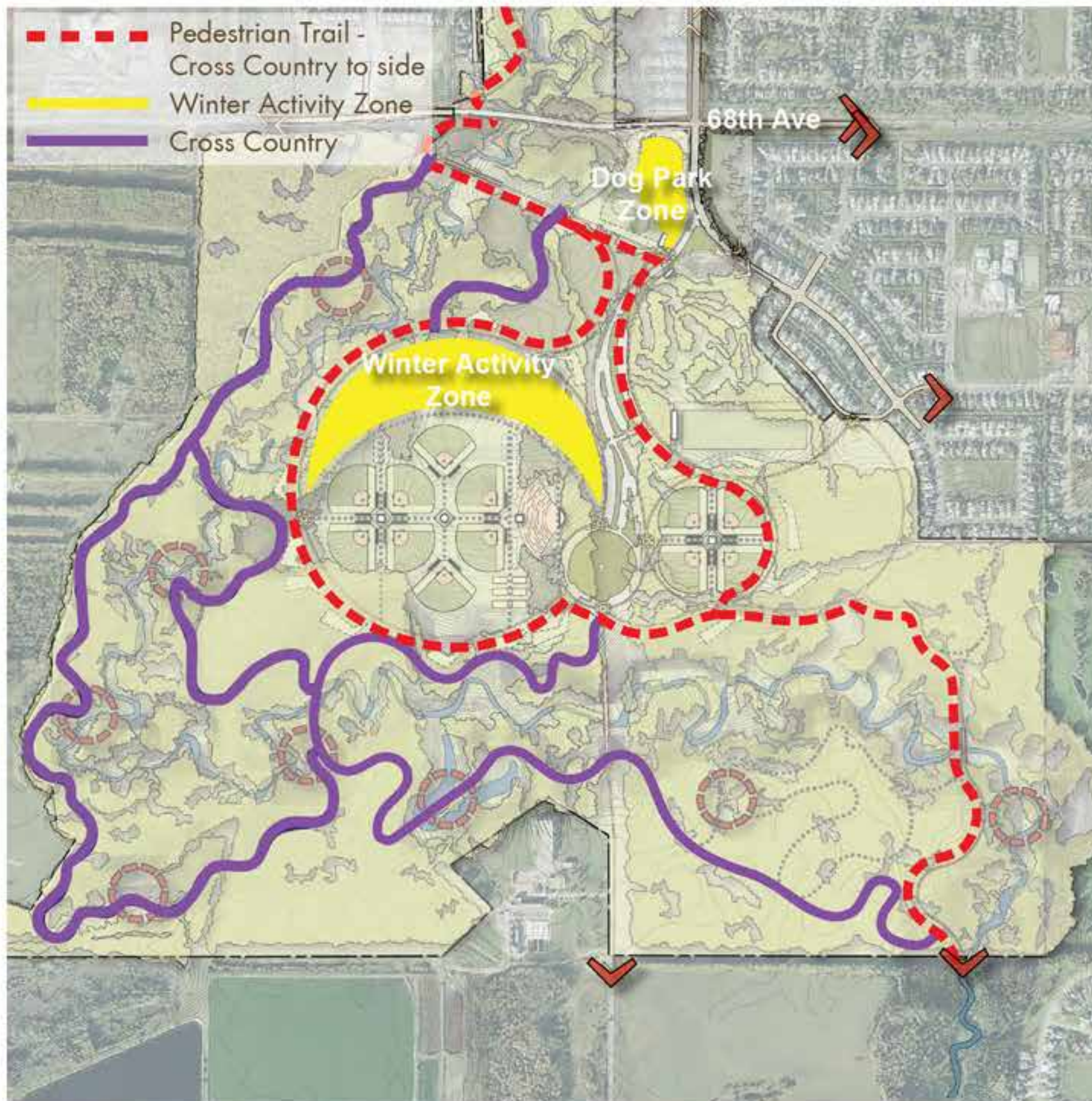
1. Drive & Parking	\$962,240
2. Drive & Parking - Secondary Trail	\$49,200
3. Baseball Field Complex A	\$3,860,000
4. Baseball Field Complex A - Nature Trail & Playground	\$381,940
5. Baseball Field Complex A - Architecture & Infrastructure	\$415,000
6. Baseball Field Complex A - Amphitheater	\$250,000
7. Baseball Field Complex A - Landscape	\$191,250
8. Baseball Field Complex B	\$1,877,990
9. Baseball Field Complex B - Architecture & Infrastructure	\$472,750
10. Baseball Field Complex B - Landscape	\$156,250
11. Frisbee Golf	\$15,000
12. Trail System - Primary Trail	\$1,396,617
13. Trail System - Natural Trail	\$343,617
14. Trail System - Landscape & Interpretive Zones	\$230,770
15. Golf Area	\$440,100
16. Dog Park & RC Area	\$155,000
17. BMX Course	\$94,050
18. BMX Pavilion	\$175,500

# SOUTH BEAR CREEK TRAIL HIERARCHY

The South Bear Creek trail system is the only zone in Muskoseepi Park that contains all five trail types. Being the most active sports-oriented zone, it has several trail experiential options. The primary trail connects the site north and south and expands to connect each of the baseball complexes. Secondary trails connect the neighborhood streets and parking areas to the primary. The nature trails connect the smaller elements such as the individual baseball fields, amphitheater, and interpretive zones. Cleared, non-surfaced trails occur in the most sensitive habitat where there is very minimal clearing.

The City of Grande Prairie should strive to align with the "Alberta Recreation Corridor & Trails Classification System" for continuity in design, layout, trail types, and materials. When the City connects to County trails, this will allow for matching standards and an overall smooth transition from City to County. Trail widths shall be set according to City design standards as set by the City Administration.





## SOUTH BEAR CREEK SEASONALITY

The ability to use Muskoseepi Park year-round is essential to the citizens of Grande Prairie. In terms of seasonality, South Bear Creek is the best area for a diversity of wintertime use. This area allows for winter pedestrian hiking, snowshoeing, cross country skiing, and dog parks. The use of quads and snow mobiles should be discouraged in this area, as they can be destructive in a sensitive habitat like South Bear Creek. The cross country skiing in this area is in two distinct areas. One is hidden in the forest, using the cleared hiking trails and the other is along the larger primary trail. Cross country skiing parallels the pedestrian in separate lanes along the primary trail. Maintenance and promotion of these winter activities are crucial to year round success of the park.



# SOUTH BEAR CREEK PROJECTS

## 1. Drive & Parking \$962,240

As 100th Street begins to turn westward, an intersection and drive leading into South Bear Creek is proposed. This gradual, sweeping arch drive allows for a scenic, "park drive" experience. As park visitors are led away from the busy streets on this meandering drive, they are welcomed to the largest preserved area of forest within Muskoseepi Park. This new alignment softens the harsh lines of the utility easement. Pull-in parking along the drive accommodates 773 cars and economizes construction. Within the drive islands are rain gardens for water percolation and sediment removal. The terminus of the drive ends in a round-a-bout drop off for quick access to a multitude of activities. The drive layout utilizes existing clear zones and proposes reforested edges for habitat/ecotone diversity.

## 2. Drive & Parking - Secondary Trail \$49,200

The secondary trail parallels the entry drive and provides access to all amenities. The trail directs users toward various activity venues within South Bear Creek as well as connecting into the greater trail hierarchy system. This alignment increases pedestrian safety as it is a defined circulation. Drive aisle crossings occur at specific, delineated locations to ensure safety.

## 3. Baseball Complex A \$3,860,000

The first baseball complex, which is also the larger of the two (8 fields), occurs within the existing cleared area. The previous alignment is changed for a more efficient use of space and to increase the number of fields. Its location within the larger primary trail system allows for easy access and visibility. Implementation of these fields will require adherence to the Canadian Federation of Amateur Baseball field size and design requirements to ensure qualifying tournament play.

## 4. Baseball Complex A - Architecture & Infrastructure \$415,000

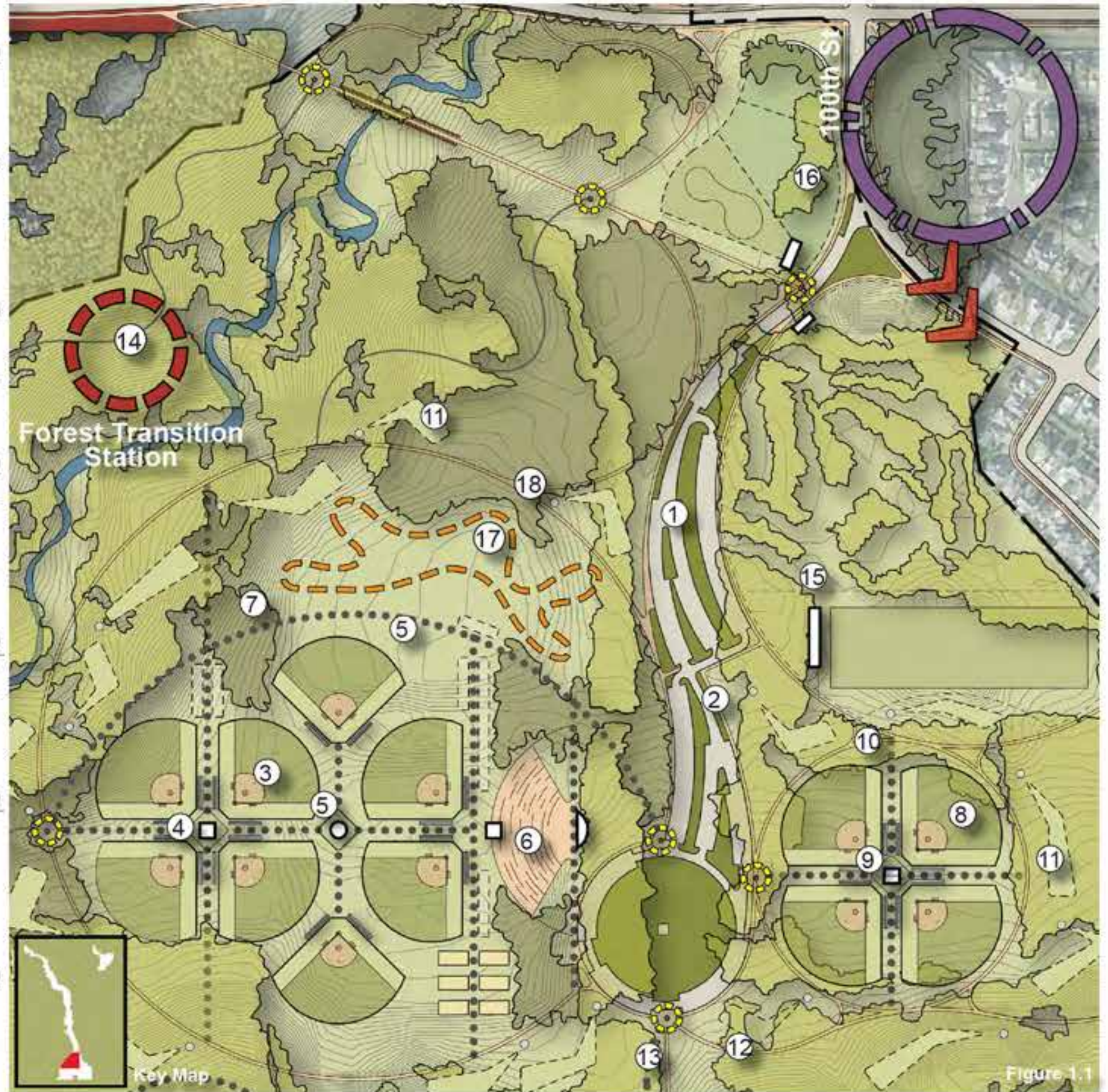
The new fields here are supported by new concession stands and restrooms at the center of the four-plex. The styling and design of these structures should adhere to the Architecture Identity Guidelines listed on page 40. With its plaza paving and location within the complex, the architecture serves as a central gathering and social space for players, fans, families, and park users.

## 5. Baseball Complex A - Nature Trail & Playground \$381,940

Within the primary trail circle, tertiary trails connect pedestrians to the activity venues via nature trails. During tournament usage, space is available along these north to south connector trails for vendors and tents. Along the nature trail through Complex A, a playground is proposed at the central axis intersection. Playground and volleyball program elements allow for a more diverse family friendly experience for multiple age groups during games.

## 6. Baseball Complex A - Amphitheater \$250,000

A new events amphitheater claims the eastern terminus of the trail axis. This seating arrangement accommodates a diversity of group sizes, ranging from a small class up to 1500 people at full capacity. This size flexibility affords the opportunity for large concerts and shows, supporting Summer Slam and other local festivals. This site also





includes a projector/sound room and restrooms with the same stone pattern and styling as the stone band seating. With the restored boreal forest as the backdrop to the proposed bandshell/stage, the views of nature take precedence over the built environment in South Bear Creek.

**7. Baseball Complex A - Landscape \$191,250**

In previously disturbed areas, a boreal forest restoration plan is introduced. As well as forest plantings, an “ecotone” overlay planting should occur as a critical component of healthy wildlife habitat. This is accomplished through a progression of plantings from meadow to forest, rather than a harsher mown transition. A local ecologist should be consulted for the implementation of this strategy.

**8. Baseball Field Complex B \$1,877,990**

Similar to Complex A, Complex B proposes a realignment of fields for a more efficient use of space. This alignment follows existing cleared zones and preserves all tree lines. With all home plates radiating out from one point, an obvious and simple central gathering space is created. Its location within the larger primary trail system allows for easy access and visibility. Implementation of these fields will require adherence to the Canadian Federation of Amateur Baseball field sizes and design regulations.

**9. Baseball Field Complex B - Architecture & Infrastructure \$472,750**

Utilizing the existing structure footprint, the design proposes an outwardly focused structure that equally serves all fields in the complex. The architecture in Complex A is comprised of concession stands and restrooms. The styling and design of these structures should adhere to the Architecture Identity Guidelines listed on page 40. With its plaza paving and location within the complex, the architecture serves as a central gathering and social space for players, fans, families, and park users.

**10. Baseball Field Complex B - Landscape \$156,250**

In previously disturbed areas, a boreal forest restoration plan is introduced. As well as forest plantings, an “ecotone” overlay planting should occur as a critical component of healthy wildlife habitat. This is accomplished through a progression of plantings from meadow to forest, rather than a harsher mown transition. A local ecologist should be consulted for the implementation of this strategy.

**11. Frisbee Golf \$15,000**

Tucked away into the forest is an 18 hole frisbee golf course. This course fades into the forest, with the basket being the only visible built element. Golf holes should route around the proposed activities in South Bear Creek. Clearing should only occur unless absolutely necessary to accommodate game play while preserving the forest experience.

**12. Trail System - Primary Trail \$1,396,617**

The key purpose of South Bear Creek’s primary trail system is to connect pedestrians north to south. This connection is within the park as well as outward to larger City and County trail systems. If these regional systems are not present, the trail and park should position itself in a manner that will accommodate these future connections. In this area, the trail also diverts in a loop around Baseball Complex A to carry larger groups during special events and tournaments.



**13. Trail System - Natural Trail** **\$343,617**

The key purpose of South Bear Creek’s natural trail system is to connect smaller spaces within the larger system. There are two types of natural trails in South Bear Creek. The first, as seen by the dotted black line, is a granular, regional material. The second trail, as seen by the thin solid black line, is a small, cleared trail for the most natural form of hiking within Muskoseepi Park. With minimal clearing and narrow footpaths, these trails will be the least obtrusive and are visually discreet.

**14. Trail System - Interpretive Zones** **\$230,770**

In South Bear Creek, eight diverse interpretive stations are proposed. These points occur along the trail to capture and interpret different aspects of the site, such as boreal forest, creek habitat, wildlife corridor, forest habitat, oxbows, forest meadow, ungulates, and hydrologic natural systems. These interpretive stations should be tucked into the landscape and positioned in a way that capitalizes on the most effective views for the pertaining educational topic. With space large enough to accommodate a small class, seating should be arranged in a manner that provides a learning atmosphere. Local ecologists and school district teachers should be consulted for corresponding curriculum, teaching material, and capacity facilitation commentary.

**15. Golf Area** **\$440,100**

The golf driving range area claims the tree line of the existing boreal forest. Using the same clearing zone, the range has minimal development footprint. To create a better defined tee box area for range users, a pavilion is proposed on the western edge of the range. For efficient use of facilities and maintenance, a shared maintenance building is proposed between the “Wee-Links” course and surrounding South Bear Creek activities. Both the “Wee-Links” course and the Driving range should be enclosed with fencing for safety and to keep stray golf balls within a defined area.

**16. Dog Park & RC Area** **\$155,000**

Positioned at the entry point into South Bear Creek is a dual use dog park and RC area. Accommodating both large and small breed dogs in separate fenced areas, multiple users are allowed to comfortably use the park. Features within the dog park, such as fountains, benches, and obstacle courses should be usable in all seasons. The RC course, adjacent to the dog park, uses the existing cleared zones and is shaped by the surrounding trail system. Grading and landscape should be appropriate for these sports while providing an engaging and imaginative experience for visitors.

**17. BMX Course** **\$94,050**

Situated between the primary and nature trails system, the BMX course alignment is shaped within previously cleared zones. With the rugged nature of this activity, various experience levels (training, recreational, and competition) are provided by different areas of difficulty. Defined access and maintenance are crucial throughout the seasons for an enjoyable and safe course. Appropriate safety guidelines should be posted and considered during the design of this special use facility.

**18. BMX Pavilion** **\$175,500**

For the necessary maintenance of a BMX course, a separate maintenance structure is proposed to accommodate all the tools, material, and equipment necessary. The styling and design of this structure should adhere to the Architecture Identity Guidelines listed on page 40.





Figure 1.2

**12. Trail System - Primary Trail (continued)** **\$1,396,617**

The key purpose of South Bear Creek's primary trail system is to connect pedestrians north to south. This connection is within the park as well as outward to larger City and County trail systems. If these regional systems are not present, the trail and park should position itself in a manner that will accommodate these future connections. In this area, the trail also diverts in a loop around Baseball Complex A to carry larger groups during special events and tournaments.

**13. Trail System - Natural Trail (continued)** **\$343,617**

The key purpose of South Bear Creek's natural trail system is to connect smaller spaces within the larger system. There are two types of natural trails in South Bear Creek. The first, as seen by the dotted black line, is a local granular material. The second trail, as seen by the thin solid black line, is a small, cleared trail for the most natural form of hiking within Muskoseepi Park. With minimal clearing and narrow footpaths, these trails are the least obtrusive and are visually unobtrusive.

**14. Trail System - Interpretive Zones (continued)** **\$230,770**

In South Bear Creek, eight diverse interpretive stations are proposed. These points occur along the trail to capture and interpret different aspects of the site, such as boreal forest, creek habitat, wildlife corridor, forest habitat, oxbows, forest meadow, ungulates, and hydrologic natural systems. These interpretive stations should be tucked into the landscape and positioned in a way that capitalizes on the most effective views for the pertaining educational topic. With space large enough to accommodate a small class, seating should be arranged in a manner that provides a learning atmosphere. Local ecologists and school district teachers should be consulted for corresponding curriculum, teaching material, and capacity facilitation commentary.



Refer to Figure 1.2, Bottom Left, for Project Locations

#### 12. Trail System - Primary Trail (continued)

\$1,396,617

The key purpose of South Bear Creek's primary trail system is to connect pedestrians north to south. This connection is within the park as well as outward to larger City and County trail systems. If these regional systems are not present, the trail and park should position itself in a manner that will accommodate these future connections. In this area, the trail also diverts in a loop around Baseball Complex A to carry larger groups during special events and tournaments.

#### 13. Trail System - Natural Trail (continued)

\$343,617

The key purpose of South Bear Creek's natural trail system is to connect smaller spaces within the larger system. There are two types of natural trails in South Bear Creek. The first, as seen by the dotted black line, is a local granular material. The second trail, as seen by the thin solid black line, is a small, cleared trail for the most natural form of hiking within Muskoseepi Park. With minimal clearing and narrow footpaths, these trails are the least obtrusive and are visually unobtrusive.

#### 14. Trail System - Interpretive Zones (continued)

\$230,770

In South Bear Creek, eight diverse interpretive stations are proposed. These points occur along the trail to capture and interpret different aspects of the site, such as boreal forest, creek habitat, wildlife corridor, forest habitat, oxbows, forest meadow, ungulates, and hydrologic natural systems. These interpretive stations should be tucked into the landscape and positioned in a way that capitalizes on the most effective views for the pertaining educational topic. With space large enough to accommodate a small class, seating should be arranged in a manner that provides a learning atmosphere. Local ecologists and school district teachers should be consulted for corresponding curriculum, teaching material, and capacity facilitation commentary.

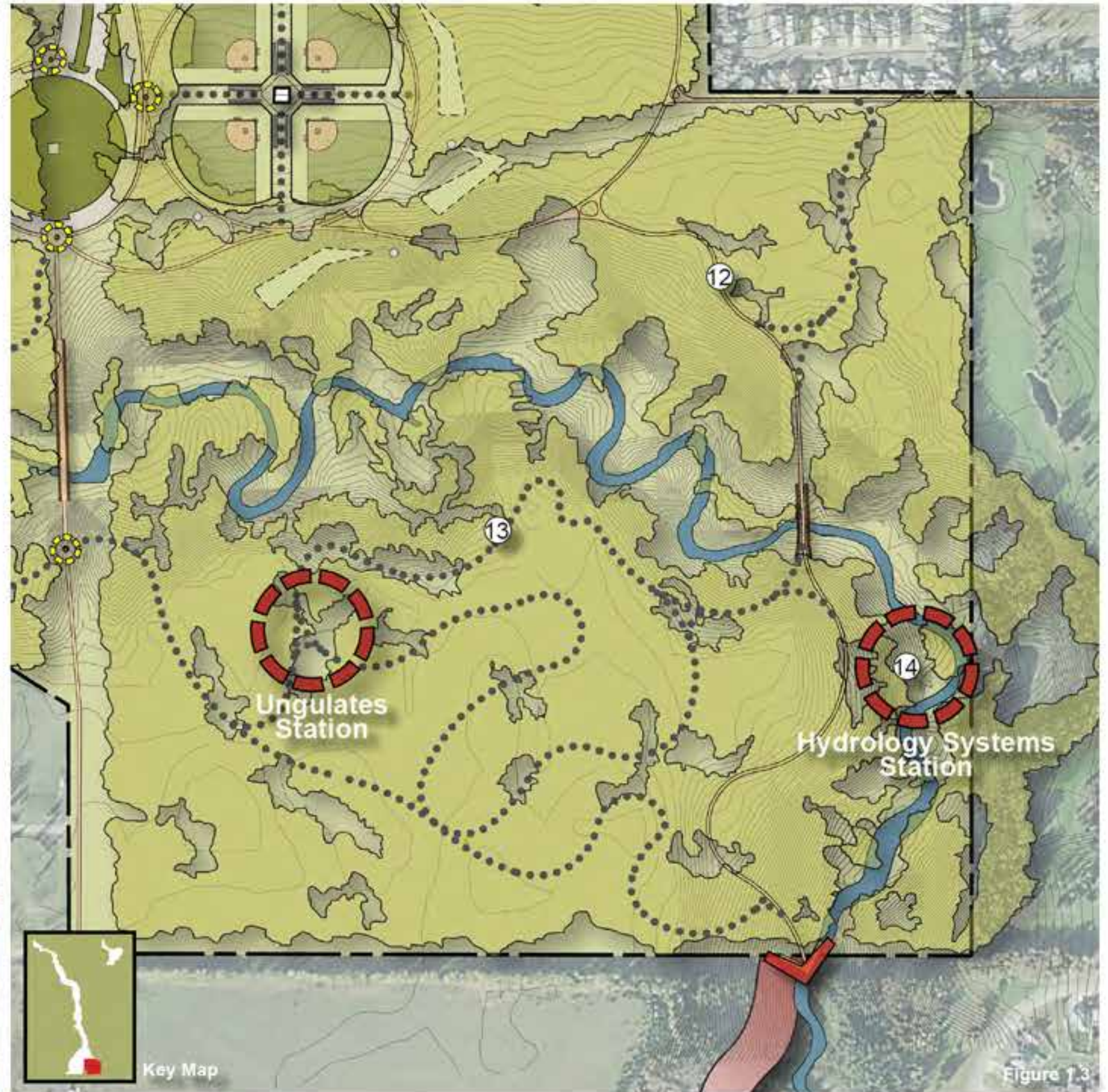


Figure 1.3





